

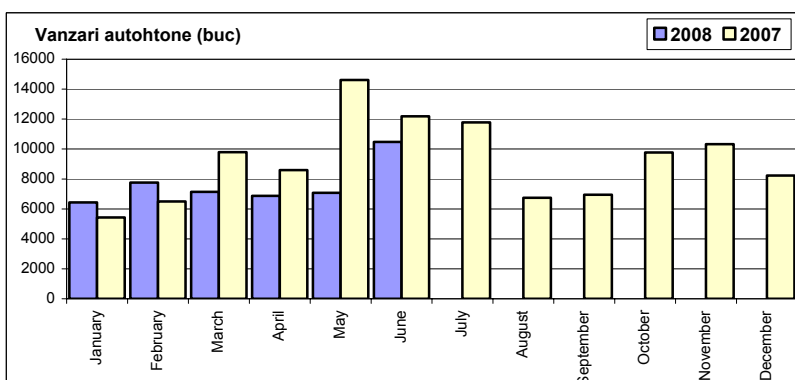
Top vânzări marci automobile - Iunie 2008

	Autoturisme				Vehicule comerciale (inclusiv minibusuri și autobuze)				Total			
	unitati		cota piata		< 3.5 t		> 3.5 t		unitati		cota piata	
	June-08	Cumul-08	June-08	Cumul-08	June-08	Cumul-08	June-08	Cumul-08	June-08	Cumul-08	June-08	Cumul-08
DACIA	8 412	40 461	27.2%	27.9%	1 074	5 367	0	0	9 486	45 828	26.0%	26.0%
RENAULT	2 497	10 923	8.1%	7.5%	261	1 549	150	934	2 908	13 406	8.0%	7.6%
FORD	1 961	9 350	6.3%	6.4%	555	2 728	0	0	2 516	12 078	6.9%	6.8%
VW	2 079	10 149	6.7%	7.0%	302	1 725	30	225	2 411	12 099	6.6%	6.9%
SKODA	2 393	12 713	7.7%	8.8%	14	86	0	0	2 407	12 799	6.6%	7.3%
DAEWOO	2 060	5 281	6.7%	3.6%	0	0	0	0	2 060	5 281	5.7%	3.0%
OPEL	1 668	8 962	5.4%	6.2%	62	273	0	0	1 730	9 235	4.8%	5.2%
PEUGEOT	1 394	5 954	4.5%	4.1%	308	1 698	0	0	1 702	7 652	4.7%	4.3%
FIAT	1 199	4 469	3.9%	3.1%	422	3 398	0	0	1 621	7 867	4.5%	4.5%
HYUNDAI	1 379	6 015	4.5%	4.1%	23	47	0	0	1 402	6 062	3.8%	3.4%
CHEVROLET	1 091	5 362	3.5%	3.7%	0	0	0	0	1 091	5 362	3.0%	3.0%
TOYOTA	893	4 978	2.9%	3.4%	83	494	0	0	976	5 472	2.7%	3.1%
MERCEDES	359	1 558	1.2%	1.1%	275	1 455	295	1 990	929	5 003	2.6%	2.8%
KIA	722	4 002	2.3%	2.8%	21	65	0	0	743	4 067	2.0%	2.3%
IVECO	0	0	0.0%	0.0%	238	1 536	310	2 387	548	3 923	1.5%	2.2%
CITROEN	384	1 376	1.2%	0.9%	123	693	0	0	507	2 069	1.4%	1.2%
MITSUBISHI	344	1 898	1.1%	1.3%	79	422	24	74	447	2 394	1.2%	1.4%
SEAT	395	1 985	1.3%	1.4%	0	0	0	0	395	1 985	1.1%	1.1%
NISSAN	218	1 239	0.7%	0.9%	106	422	1	2	325	1 663	0.9%	0.9%
AUDI	264	1 522	0.9%	1.0%	0	0	0	0	264	1 522	0.7%	0.9%
Rest	1 218	6 791	3.9%	4.7%	6	78	728	3 793	1 952	10 662	5.4%	6.0%
TOTAL	30 930	144 988	100.0%	100.0%	3 952	22 036	1 538	9 405	36 420	176 429	100.0%	100.0%

Vanzari autoturisme autohtone

Luna/An	2008	2007	Variatie
January	6 429	5 429	18.4%
February	7 761	6 494	19.5%
March	7 135	9 793	-27.1%
April	6 872	8 591	-20.0%
May	7 073	14 606	-51.6%
June	10 472	12 183	-14.0%
July	-	11 782	-
August	-	6 743	-
September	-	6 945	-
October	-	9 774	-
November	-	10 328	-
December	-	8 234	-
Total	45 742	57 096	-19.9%

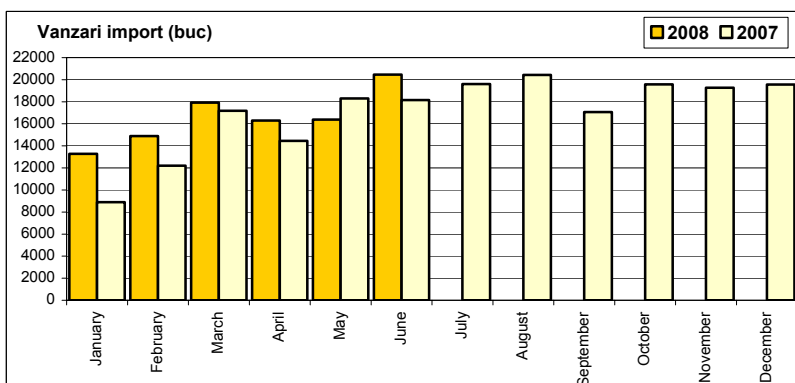
110 902



Vanzari autoturisme import

Luna/An	2008	2007	Variatie
January	13 283	8 897	49.3%
February	14 890	12 210	21.9%
March	17 925	17 176	4.4%
April	16 299	14 453	12.8%
May	16 391	18 306	-10.5%
June	20 458	18 154	12.7%
July	-	19 611	-
August	-	20 438	-
September	-	17 066	-
October	-	19 573	-
November	-	19 266	-
December	-	19 569	-
Total	99 246	89 196	11.3%

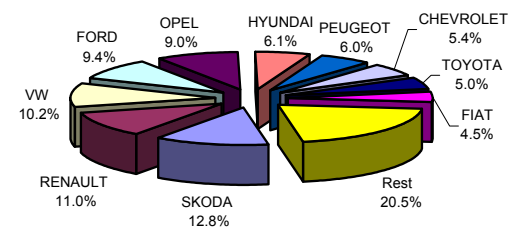
204 719



Top vanzari autoturisme import - marci

MARCA	Iunie		Variație Mai		6 luni 2008		Variație 2007	
	poziție	unitati	poziție	procent	poziție	unitati	poziție	procent
SKODA	2	2393	1	↗ 13.8%	1	12713	2	↗ 12.0%
RENAULT	1	2497	3	↘ 65.1%	2	10923	1	↘ -21.1%
VOLKSWAGEN	3	2079	2	↗ 23.6%	3	10149	3	↘ -2.3%
FORD	4	1961	4	↗ 29.9%	4	9350	6	↗ 47.2%
OPEL	5	1668	5	↗ 29.2%	5	8962	4	↗ 16.7%
HYUNDAI	7	1379	6	↗ 21.0%	6	6015	8	↗ 11.3%
PEUGEOT	6	1394	7	↗ 27.7%	7	5954	5	↘ -8.1%
CHEVROLET	9	1091	8	↗ 15.1%	8	5362	7	↘ -12.3%
TOYOTA	10	893	9	↗ 6.1%	9	4978	9	↗ 21.9%
FIAT	8	1199	11	↗ 98.2%	10	4469	10	↗ 10.0%
Rest		3904		6.5%		20371		51.5%
TOTAL		20458		24.8%		99246		11.3%

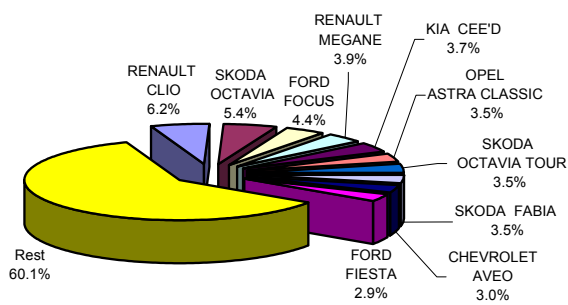
Autoturisme import - marci - 6 luni 2008



Top vanzari autoturisme import - modele

MODEL	Iunie		Variație Mai		6 luni 2008		Variație 2007	
	poziție	unitati	poziție	procent	poziție	unitati	poziție	procent
RENAULT CLIO	1	1711	2	↗ 103.2%	1	6150	1	↘ -23.8%
SKODA OCTAVIA	3	936	1	↗ 3.5%	2	5355	7	↗ 57.0%
FORD FOCUS	2	1083	3	↗ 17.6%	3	4321	13	↗ 6.1%
RENAULT MEGANE	6	628	7	↗ 12.1%	4	3836	2	↘ -25.7%
KIA CEE'D	7	612	4	↘ -16.8%	5	3638	-	-
OPEL ASTRA CLASSIC	9	581	9	↗ 30.6%	6	3485	4	↘ -9.1%
SKODA OCTAVIA TOUR	10	544	8	↘ -0.4%	7	3448	6	↗ 0.5%
SKODA FABIA	4	841	6	↗ 38.6%	8	3427	5	↘ -77.3%
CHEVROLET AVEO	13	500	5	↘ -25.3%	9	3013	3	↘ -28.5%
FORD FIESTA	11	509	11	↗ 29.8%	10	2893	10	↘ -1.6%
Rest		12513		25.4%		59680		14.4%
TOTAL		20458		24.8%		99246		11.3%

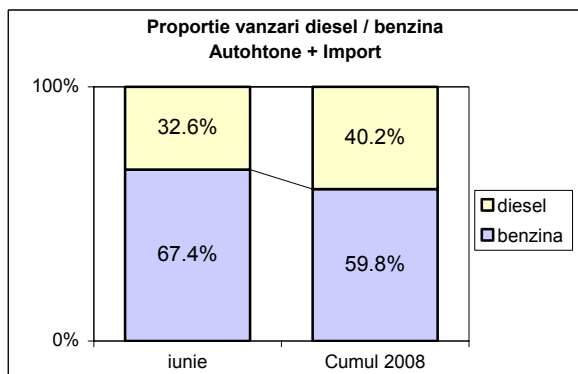
Autoturisme import - modele - 6 luni 2008



Vanzari autoturisme DIESEL

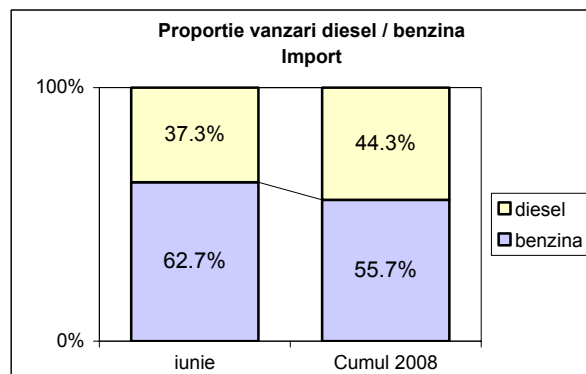
Autohtone + Import

	benzina		diesel		total
iunie	20 858	67.4%	10072	32.6%	30 930
Cumul 2008	86 646	59.8%	58342	40.2%	144 988



Import

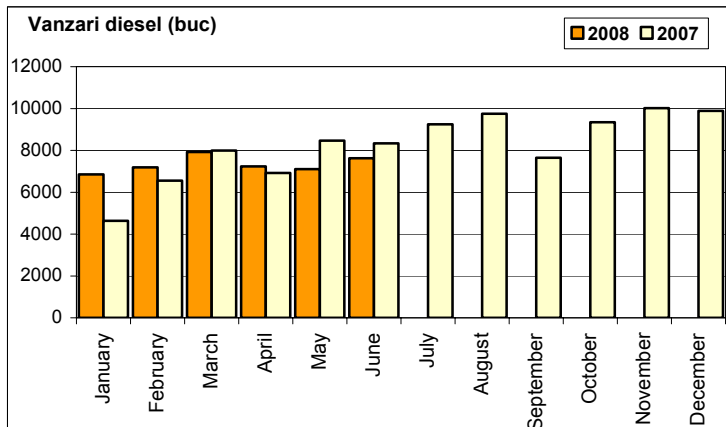
	benzina		diesel		total
iunie	12 831	62.7%	7627	37.3%	20 458
Cumul 2008	55 315	55.7%	43931	44.3%	99 246



Vanzari autoturisme DIESEL - import

Luna/An	2008	pondere diesel	2007	pondere diesel	Variație 08/07
January	6 849	51.6%	4 634	52.1%	47.8%
February	7 187	48.3%	6 556	53.7%	9.6%
March	7 926	44.2%	7 992	46.5%	-0.8%
April	7 234	44.4%	6 925	47.9%	4.5%
May	7 108	43.4%	8 469	46.3%	-16.1%
June	7 627	37.3%	8 338	45.9%	-8.5%
July	-	-	9 250	47.2%	-
August	-	-	9 752	47.7%	-
September	-	-	7 652	44.8%	-
October	-	-	9 349	47.8%	-
November	-	-	10 022	52.0%	-
December	-	-	9 891	50.5%	-
Total	43 931	44.3%	42 914	48.1%	2.4%

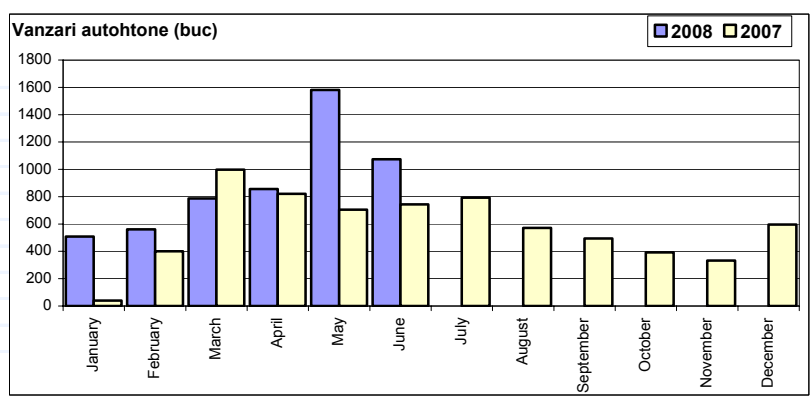
98 830



Vanzari comerciale usoare + minibusse autohtone

Luna/An	2008	2007	Variatie
January	508	40	1170.0%
February	561	401	39.9%
March	787	998	-21.1%
April	856	821	4.3%
May	1 581	705	124.3%
June	1 074	744	44.4%
July	-	793	-
August	-	571	-
September	-	494	-
October	-	392	-
November	-	333	-
December	-	596	-
Total	5 367	3 709	44.7%

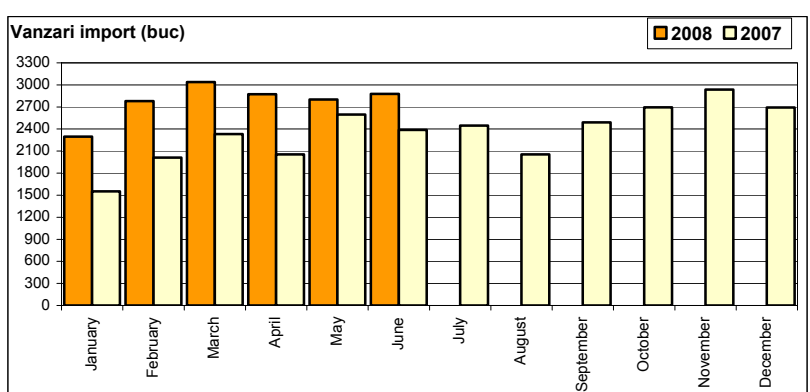
6 888



Vanzari comerciale usoare + minibusse import

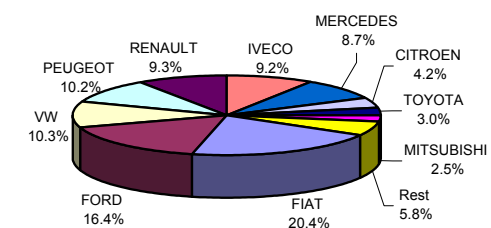
Luna/An	2008	2007	Variatie
January	2 297	1 553	47.9%
February	2 780	2 011	38.2%
March	3 038	2 331	30.3%
April	2 874	2 054	39.9%
May	2 802	2 597	7.9%
June	2 878	2 387	20.6%
July	-	2 446	-
August	-	2 054	-
September	-	2 491	-
October	-	2 695	-
November	-	2 936	-
December	-	2 693	-
Total	16 669	12 933	28.9%

28 248



Vanzari comerciale <3.5t si minibusse import - marci

MARCA	Iunie		Variatie Mai		6 Iunie 2008		Variatie 2007	
	pozitie	unitati	pozitie	procent	pozitie	unitati	pozitie	procent
FIAT	2	422	2	↘ -10.8%	1	3398	2	↗ 43.0%
FORD	1	555	1	↗ 8.6%	2	2728	1	↗ 12.9%
VOLKSWAGEN	4	302	4	↗ 1.0%	3	1725	6	↗ 42.1%
PEUGEOT	3	308	7	↗ 23.2%	4	1698	4	↗ 26.1%
RENAULT	6	261	3	↘ -15.0%	5	1549	5	↗ 27.4%
IVECO	7	238	6	↘ -7.0%	6	1536	3	↘ -1.5%
MERCEDES BENZ	5	275	5	↗ 4.2%	7	1455	7	↗ 83.9%
CITROEN	8	123	8	↘ -6.8%	8	693	8	↗ 30.8%
TOYOTA	10	83	12	↗ 56.6%	9	494	10	↗ 45.3%
MITSUBISHI	11	79	10	↗ 11.3%	10	422	9	↘ -6.0%
Rest		232		24.7%		971		40.1%
TOTAL		2878		2.7%		16669		28.9%

Vanzari com <3.5t si minibusse import - marci
- 6 Iunie 2008

Vanzari comerciale <3.5t si minibusse import - modele

MODEL	Iunie		Variatie Mai		6 Iunie 2008		Variatie 2007	
	pozitie	unitati	pozitie	procent	pozitie	unitati	pozitie	procent
FORD TRANSIT	1	450	1	↗ 16.9%	1	2372	1	↗ 12.2%
FIAT DUCATO	5	193	3	↘ -16.1%	2	1755	4	↗ 58.1%
IVECO DAILY	3	225	2	↘ -7.0%	3	1430	2	↘ -3.8%
PEUGEOT BOXER	2	227	5	↗ 23.4%	4	1248	5	↗ 37.6%
FIAT DOBLO CARGO	4	193	4	↘ -1.0%	5	1205	3	↗ 2.8%
MERCEDES SPRINTER	6	178	6	↗ 7.9%	6	927	7	↗ 51.0%
RENAULT MASTER	7	153	7	↗ 4.8%	7	897	6	↗ 25.6%
CITROEN JUMPER	9	99	8	↘ -15.4%	8	568	9	↗ 43.8%
VW TRANSPORTER	10	84	10	↘ -11.6%	9	563	11	↗ 74.3%
TOYOTA HI-LUX	11	82	17	↗ 70.8%	10	473	10	↗ 41.6%
Rest		994		-0.1%		5231		39.0%
TOTAL		2878		2.7%		16669		28.9%

Vanzari com <3.5t si minibusse import - modele
- 6 Iunie 2008